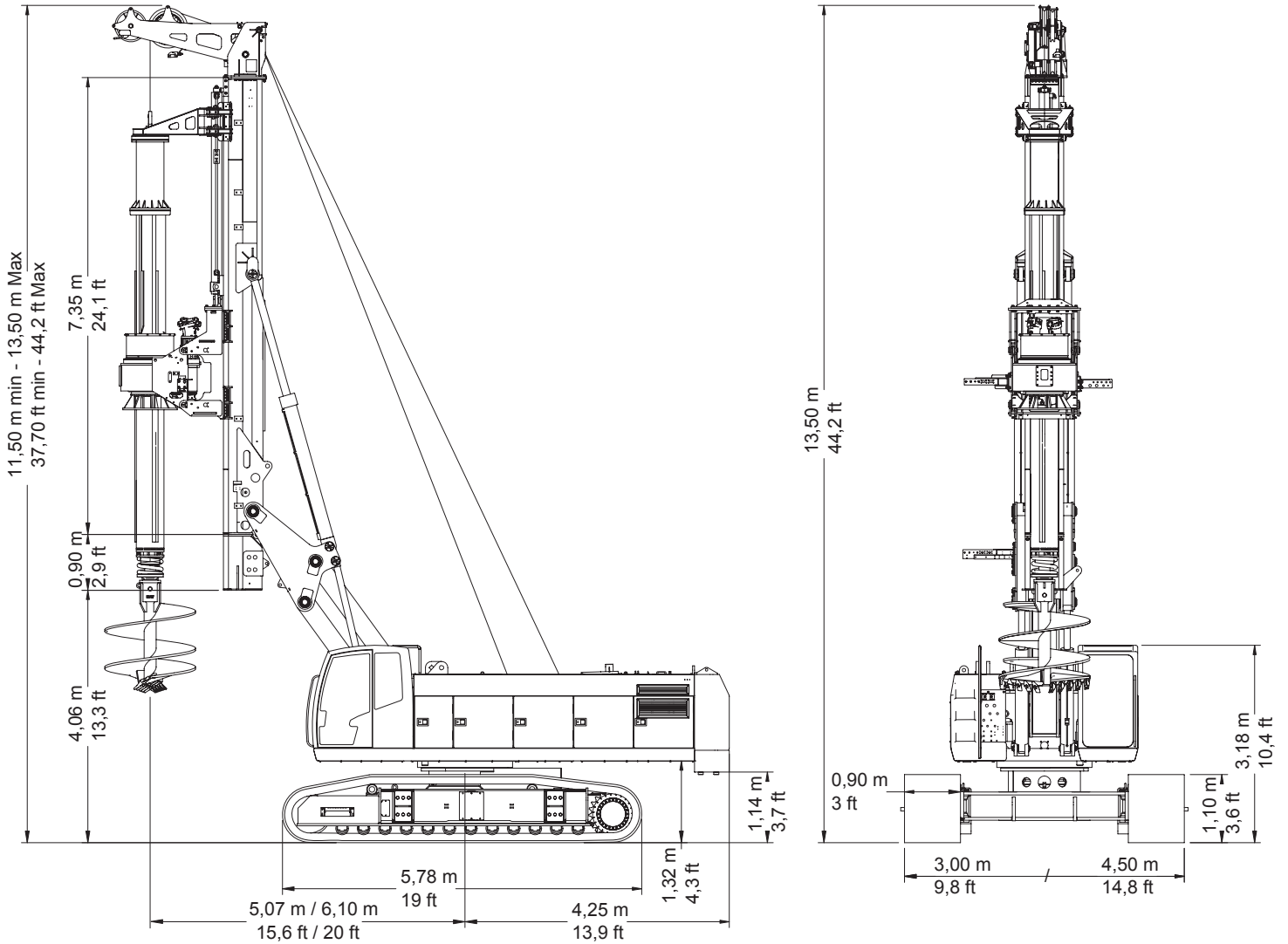


# **MAT**

## **HR 260**

*Low Headroom Rigs*





### Technical Data

#### Rotary:

Max nominal torque	260 KNm	192,000 lbsft
Max nominal pulldown	280 KN	63,000 lbs
Max nominal pullback	200 KN	45,000 lbs
Rotary stroke	2.700 mm	8.85 ft
Unloading speed		140 rpm

#### Winches:

Main winch nominal pullback	250 / 260* KN	56,000 / 58,500* lbs
Auxiliary winch nominal pullback	80 / 120 / 180 KN	18,000/27,000/40,500 lbs

#### Diesel Engine:

#### CATERPILLAR C13 - TIER 4

Power	328 KW	440 HP
Hydraulic oil tank	800 liters	211 gal
Fuel Tank	430 liters	114 gal

#### Expandable Crawlers:

Length	5.780 mm	18.96 ft
Width	3.000 - 4.500 mm	10 - 14.76 ft
Shoes	900 mm	3 ft

<b>Approx. Weight:</b>	70 tons	154,500 lbs
------------------------	---------	-------------

\* on request

### LOW HEAD ROOM HR 260 - Working Characteristics

#### Works with Augers & Buckets:

Max diameter	2.600 mm	8.5 ft
Depths	25 m	82 ft

