

# BAUER BG 15 H

## Rotary Drilling Rig

Base Carrier BT 50



## The BG ValueLine

*Perfection is achieved  
when there is nothing left to take away.*

Drilling uncased deep boreholes stabilized by drilling fluid, or drilling cased boreholes with installing casings by the rotary drive or by a hydraulic casing oscillator. If Kelly drilling is your task, then the BG ValueLine is our solution. The machines of the ValueLine are specifically adapted to no other purpose than Kelly drilling – and that perfectly.

You can expect superior Bauer performance and customary Bauer durability at affordable costs for acquisition and operation. How we do it? By applying cutting-edge technology, reduced to nothing less than the essentials.



- The whole system is optimized for economic Kelly drilling
- Increased efficiency leads to higher productivity and lower fuel consumption at the same time
- The integrated service platform for easy and safe maintenance is a key factor with regard to safety and service
- With the streamline concept, our modern and ergonomic operator cab is tailored to the rig operators
- Our assistance systems support the efficient and comfortable work - every day
- The easy, safe and fast assembling process enables lower unproductive times of the machine

## The Rotary Drilling Rig BG 15 H BT 50

### Maximum rig configuration

Drilling diameter: 1,500 mm | 59.05 in  
 Drilling depth: 44.0 m | 144.36 ft  
 Torque: 150 kNm | 110,634 lbf ft  
 Engine: CAT C7.1: 186 kW @ 1,800 rpm  
 250 HP / @ 1,800 rpm  
 Height: 18.2 m | 59.7 ft



BG 38  
BS 80



- 1 Under carriage
- 2 Upper carriage
- 3 Main winch
- 4 Auxiliary winch
- 5 Crowd winch
- 6 Kinematic system
- 7 Mast
- 8 Mast head
- 9 Kelly bar
- 10 Rotary drive (KDK)
- 11 Drilling tool



### Efficiency

- CAT-engine
- 6 m | *19.7 ft* casing string
- High-performance hydraulic system
- Single-layer winch operation



### Mobility

- Transportation width 2.5 m | *8.2 ft*
- Transportation height 3.3 m | *10.8 ft*
- Transportation length 15 m | *49.21 ft*
- Transportation weight 45 t | *99,208 lb*
- Fast mobilisation
- Remote control basic



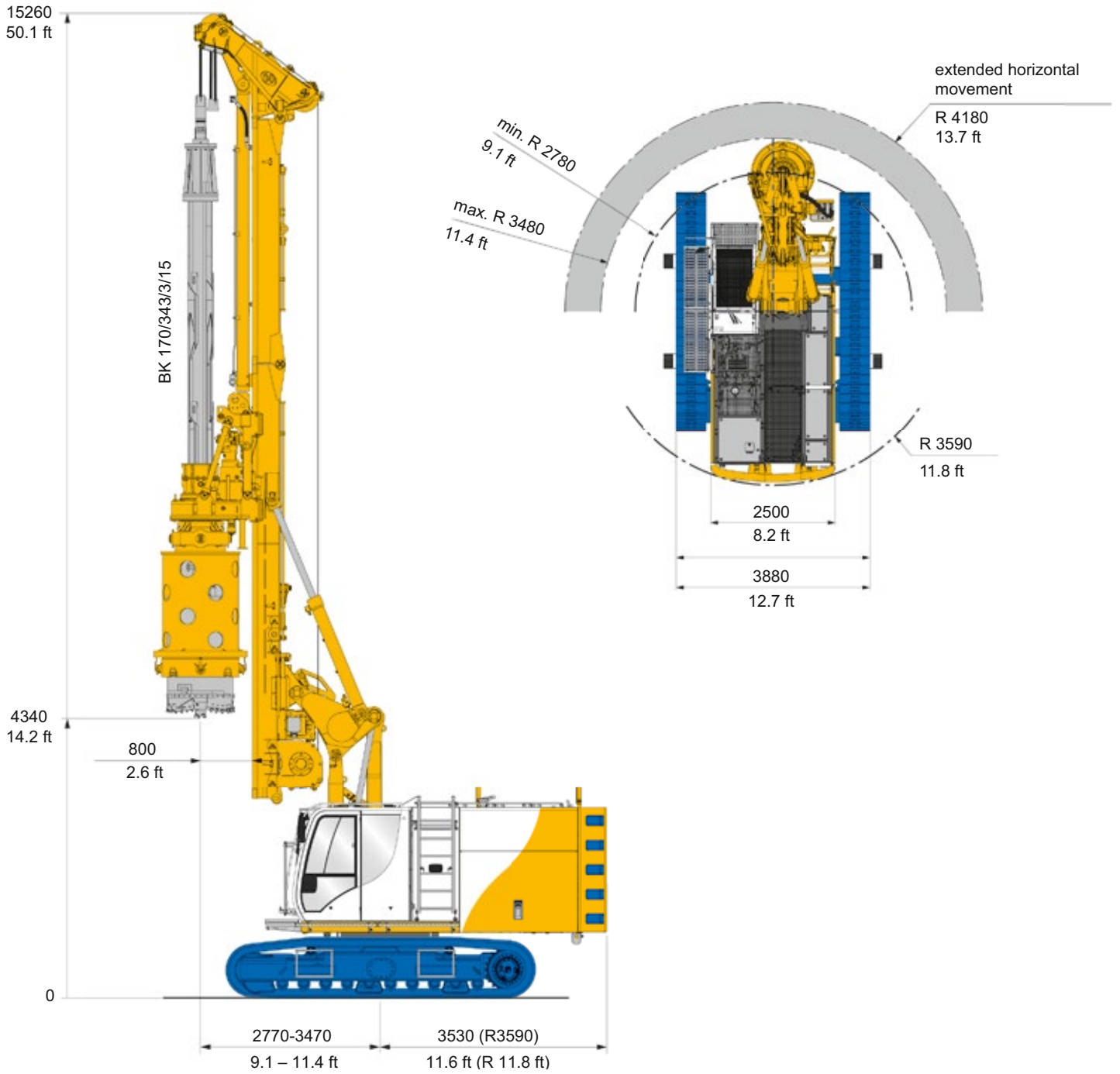
#### **Flexibility**

- Drilling power data
- CFA option
- Giant Drill with crowd winch system
- Variety of configurations



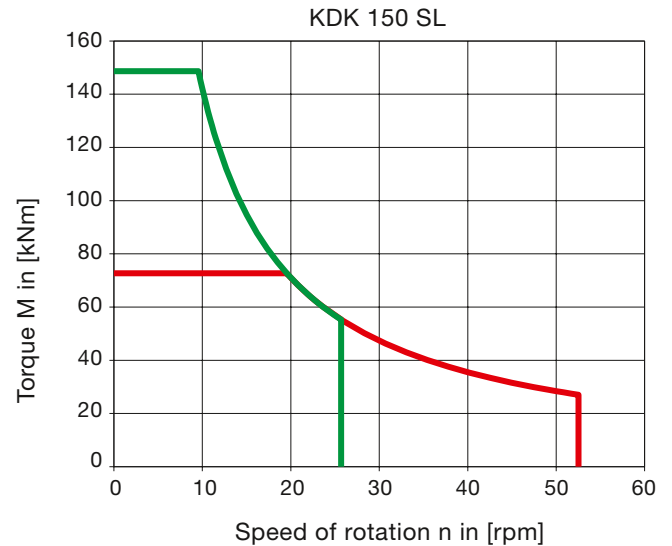
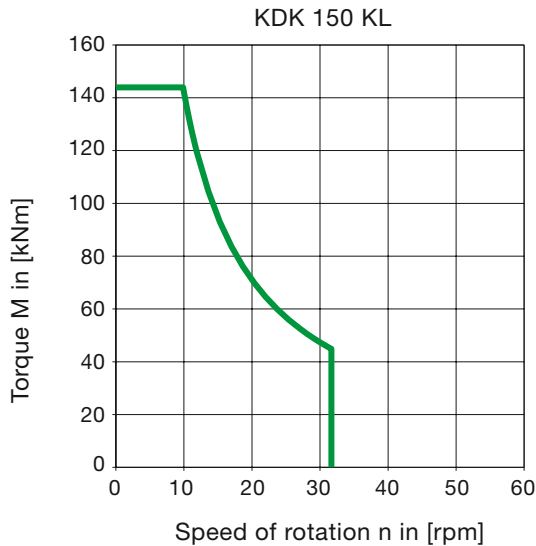
#### **Comfort**

- Comfortable cabin
- Air-suspended driver's seat
- Simplified operating concept
- B-Control screen
- Integrated service platform
- No working @ height
- Easy access to service points



**Operating weight approx. 45.0 t | 99,210 lb**  
(as shown)

Rotary drive	KDK 150 KL	KDK 150 SL
Torque (nominal) at 330 bar	145 kNm   106,950 lbf ft	150 kNm   110,634 lbf ft
Speed of rotation (max.)	32 rpm	52 rpm



Crowd	Cylinder	Winch
Crowd force push/pull (effective)	120 / 250 kN   26,975 / 56,200 lbf	120 / 200 kN   26,975 / 44,950 lbf
Crowd force push/pull *	160 / 210 kN   35,970 / 47,210 lbf	160 / 160 kN   35,970 / 35,970 lbf
Speed (down / up)	5 / 5 m/min   16.5 / 16.5 ft/min	10 / 6 m/min   33 / 19.7 ft/min
Fast speed (down / up)	15 / 20 m/min   49.2 / 65.6 ft/min	35 / 30 m/min   114.8 / 98.4 ft/min
<b>Main winch</b>		M6 / L3 / T5
Line pull (1st layer) effective / nominal		136 / 175 kN   30,575 / 39,340 lbf
Rope diameter		22 mm   0.87 in
Line speed (max.)		80 m/min   260 ft/min
<b>Auxiliary winch</b>		M5 / L2 / T5
Line pull (1st layer) effective / nominal		43 / 54 kN   9,670 / 12,140 lbf
Rope diameter		16 mm   0.63 in
Line speed (max.)		28 m/min   92 ft/min
<b>Base carrier</b>		BT 50
Engine	CAT C 7.1	CAT C 7.1
Rated output ISO 3046-1	186 kW   250 HP	186 kW   250 HP
	1,800 rpm	1,800 rpm
Engine conforms to EEC 97/68 EC EPA/CARB GB20891-2014	Stage 3 A Tier 3 Stage 3	Stage 5 Tier 4 final
Diesel tank capacity/AdBlue		540 l / 32 l   145 Gal / 8.5 Gal
Ambient air temperature (at full power) up to		45° C   113° F
Hydraulic power output (measured at inlet to rotary drive)		150 kW   200 HP
Hydraulic pressure		350 bar   35 MPa
<b>Undercarriage</b>		UW 50
Crawler type		B 60
Traction force effective / nominal		340 / 400 kN   76,450 / 90,000 lbf

\* measured at the casing drive adapter

Base Carrier

Standard

- Removable counterweight 5.0 t | 11,023 lb
- Engine diagnostic system
- Gratings on side and in front of operator's cab
- Camera system for rear area surveillance
- Multi-grade hydraulic oil
- Bauer comfort operator's cab with streamline concept, **Fig. B**
  - On-board lighting system LED
  - Air-conditioning system
  - Radio with CD, MP3, USB and Bluetooth c/w hands-free kit
  - Air-cushioned operator's seat with seat heating
  - Protective roof guard
- Integrated service platform, **Fig. A**

Optional

- Comfort handling kit
  - Camera system for winch surveillance
  - Central lubrication system
  - Electric refueling pump
  - Swivel for auxiliary rope
  - Test ports in upper carriage
  - Tool tray in front of operator's cab
  - Service tool kit
- Air compressor 1,000 l/min | 220 gal/min
- Park heating with timer



BG Attachment

Standard

- H-type kinematic system, **Fig. C**
- Mast head foldable for transportation
- Crowd cylinder
- Main winch with hydraulic freewheeling control, **Fig. D**
- Swivel for main rope

Optional

- CFA kit
- Mast support
- Crowd winch





## KDK Rotary Drive

### Standard

- Rotary drive 150 KL (single gear drive), **Fig. E and F**
- Selectable modes of operation
- Kelly drive adapter for outer casings 343 mm | 13.5 in
- Exchangeable Kelly drive keys
- Quick release couplers on hydraulic hoses



### Optional

- Rotary Drive KDK 150 SL (multi gear drive)
- Cardanic joint
- Trigger plate



## Measuring and Control Equipment

### Serial Equipment, Fig. G and H

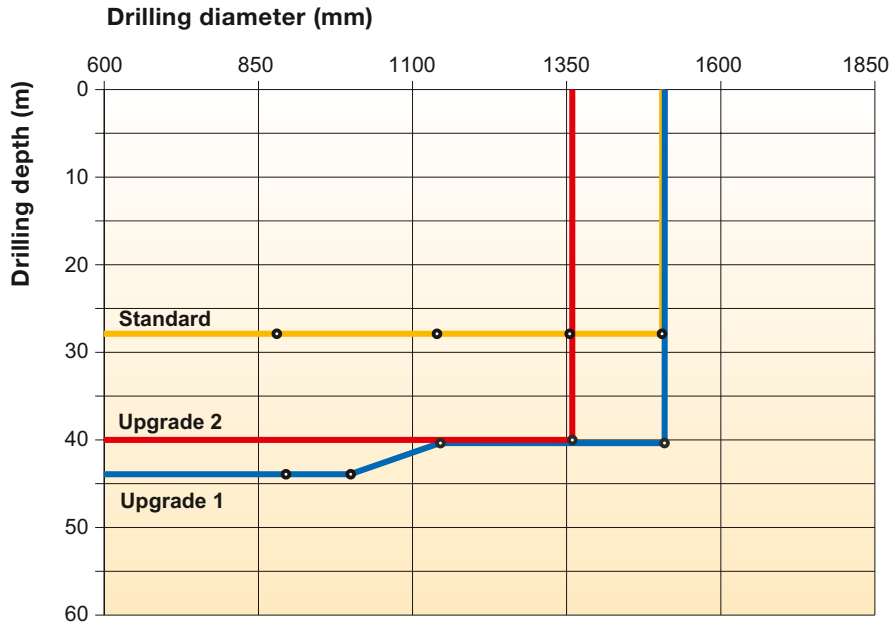
- B-Control monitor with integrated diagnostic function
- Display of fault messages as plain text
- Digital display of loads and torque
- Mast inclination measurement on x/y axes (digital/ analogous display)
- Automatic vertical alignment of mast
- Electric load sensing on main and auxiliary rope
- Speed sensing device on KDK
- Electronic limitation of horizontal displacement
- Defined torque setting for KDK
- Crowd stroke measurement
- Kelly drilling assistant
- Automatic crowd control
- One-directional spoil discharge assistant
- Bi-directional spoil discharge assistant
- Casing extraction assistant
- Slewing angle display for upper carriage

### Additional Equipment

- Remote transmission of machine data (DTR-module)
- Additional camera with monitor for rear area surveillance
- Active mast support



Overview

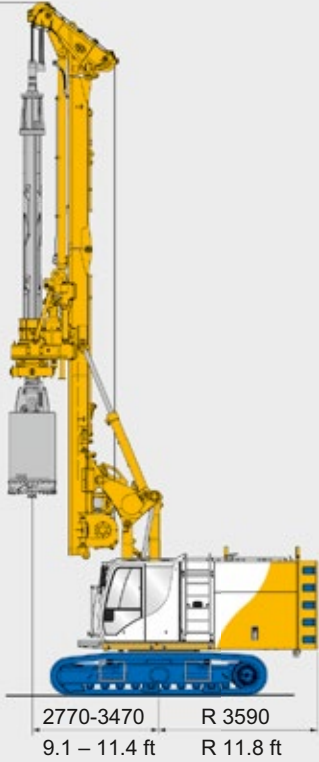


Rig Configurations

	Standard	Upgrade 1	Upgrade 2
Drilling axis	800 mm   31.5 in	800 mm   31.5 in	800 mm   31.5 in
Crowd system	Cylinder	Cylinder	Winch
Counterweight	5 t   11,025 lb	5 t   11,025 lb	5 t   11,025 lb
Lower mast extension	No	Yes	Long
Giant drill	Yes	No	No
Kelly – casing combination	3/15 with 4 m (13.1 ft) casing string	3/21 with 4 m (13.1 ft) casing string	3/15 with 6 m (19.7 ft) casing string

Standard

15260 | 50.1 ft

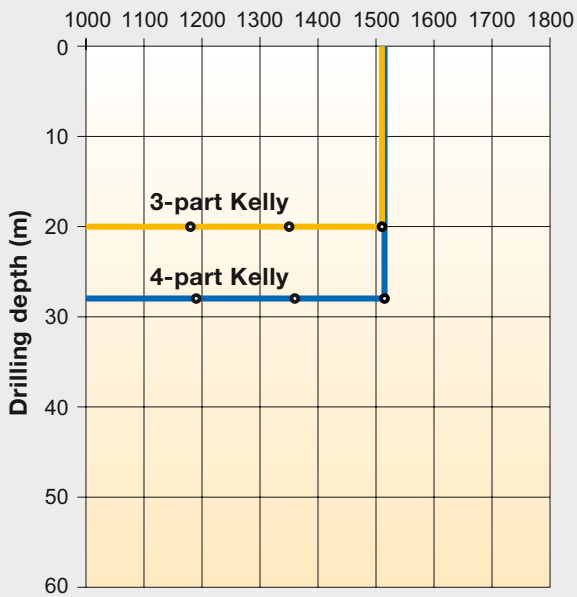


Upgrade 1

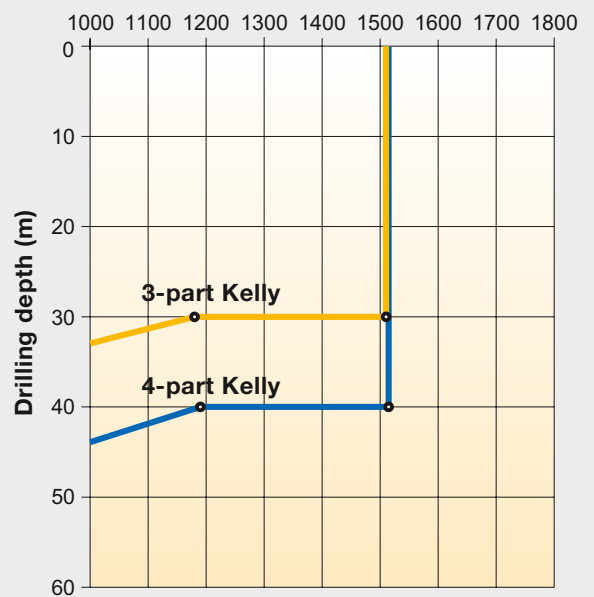
18120 | 59.4 ft



Drilling diameter (mm)



Drilling diameter (mm)



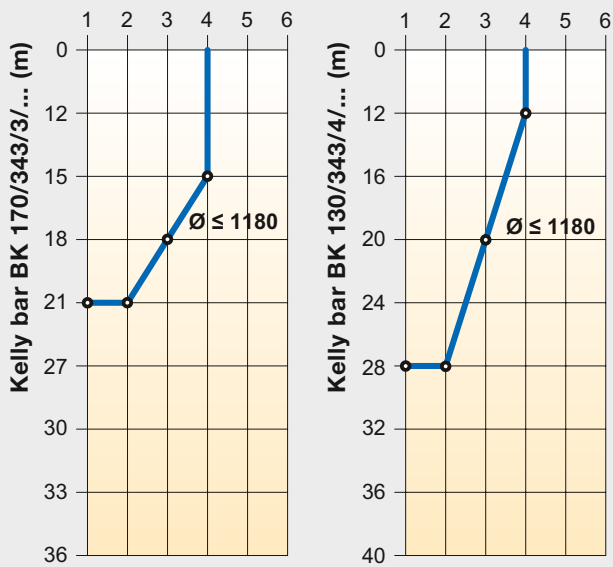
Standard



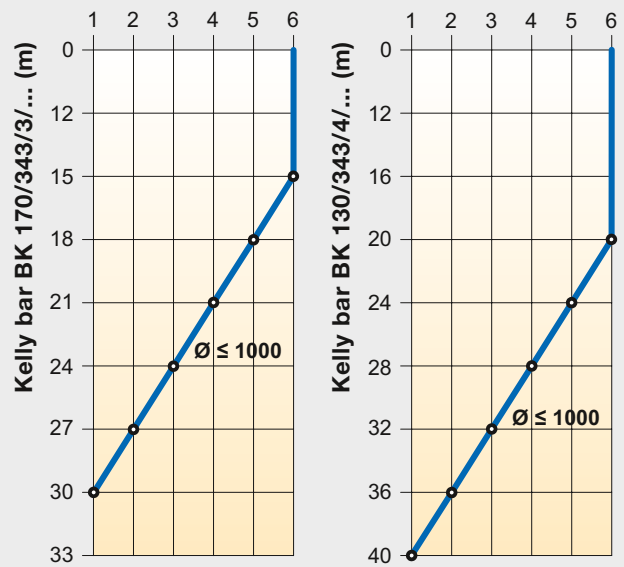
Upgrade 2



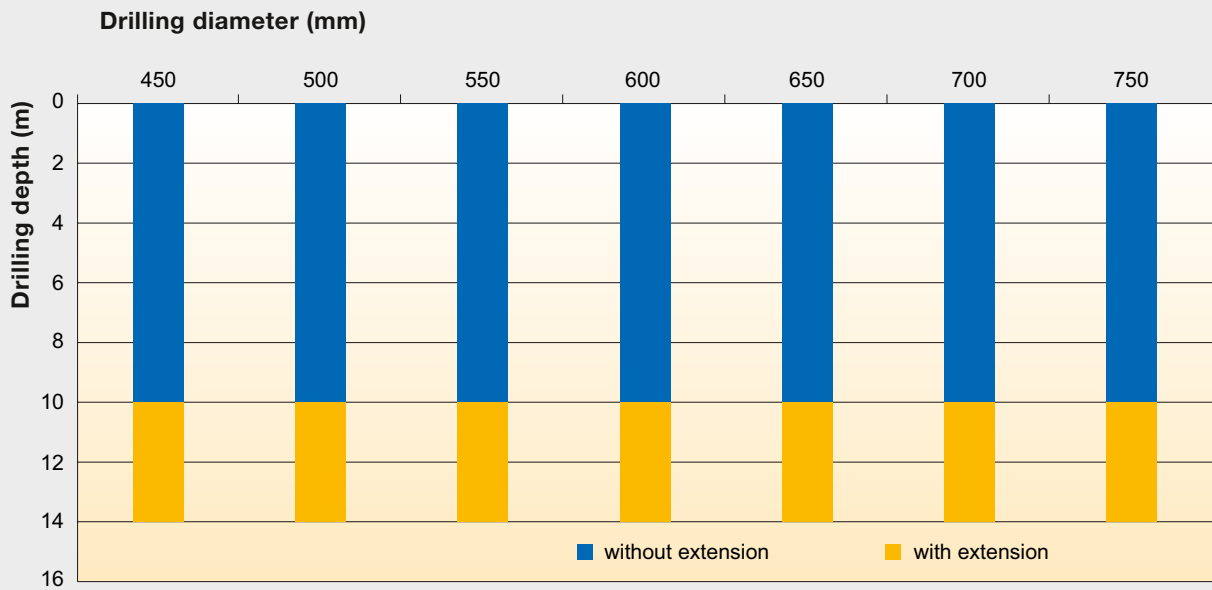
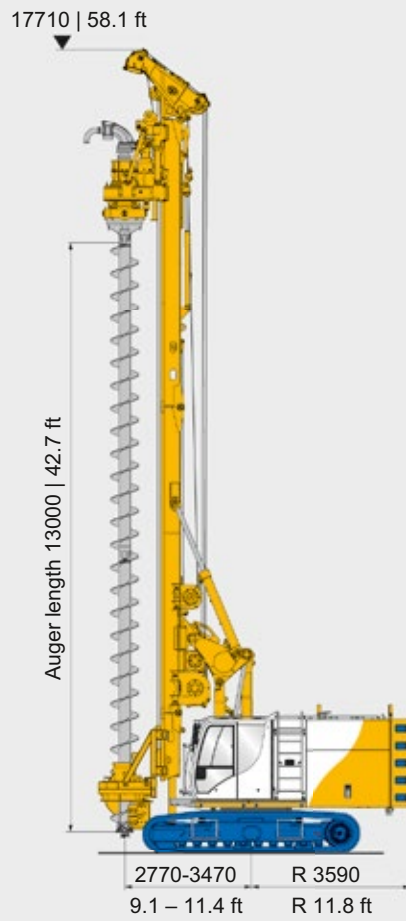
Length of casing (m)



Length of casing (m)



Upgrade 2 with CFA Equipment

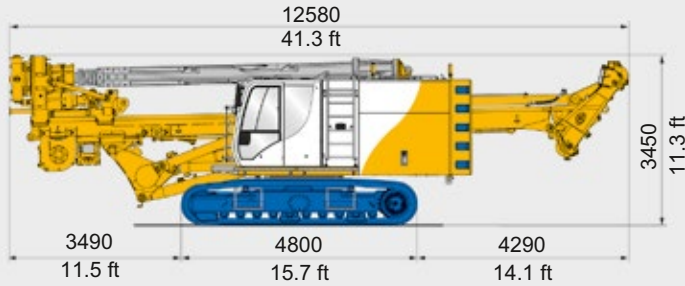


G = Weight  
B = Width

Weights shown are approximate values, optional equipment may change the overall weight and dimensions.

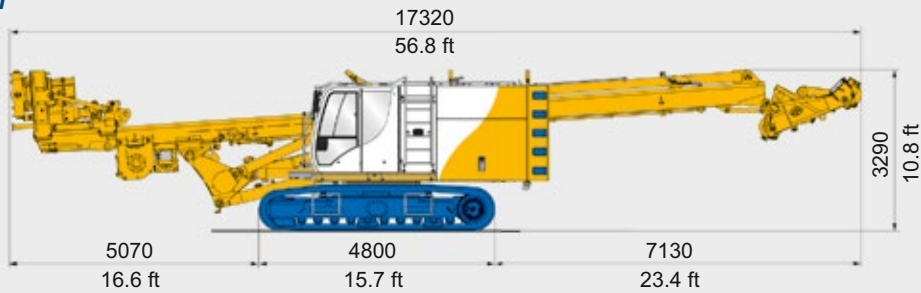
Standard with upper Kelly guide

G = 43.0 t | **94,800 lb** (+ Weight of Kelly bar)  
B = 2,500 mm | **98.4 in**



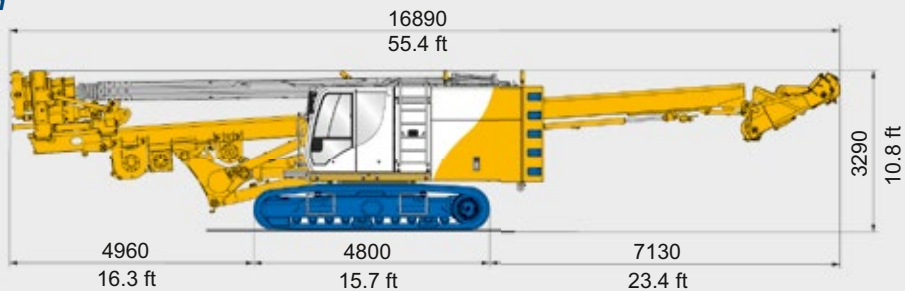
Upgrade 1

G = 45.5 t | **100,310 lb** (optionally + Weight of Kelly bar)  
B = 2,500 mm | **98.4 in**

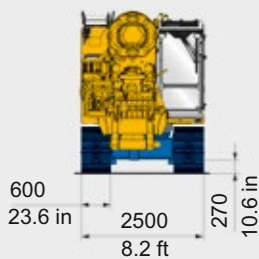


Upgrade 2

G = 45.0 t | **99,210 lb** (+ Weight of Kelly bar)  
B = 2,500 mm | **98.4 in**

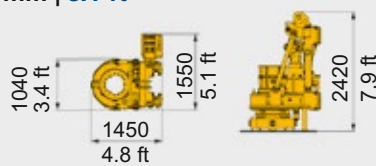


Base carrier with UW 50



Rotary drive

G = 3.5 t | **7,716 lb**  
B = 1,550 mm | **5.1 ft**







Global Network



Service



Equipment



Training

### International Service Hotline

**+800 1000 1200\*** (freecall)

**+49 8252 97-2888**

**BMA-Service@bauer.de**



**BAUER Maschinen GmbH**  
**BAUER-Strasse 1**  
**86529 Schrobenhausen**  
**Germany**  
**Tel.: +49 8252 97-0**  
**bma@bauer.de**  
**www.bauer.de**

Design developments and process improvements may require the specification and materials to be updated and changed without prior notice or liability. Illustrations may include optional equipment and not show all possible configurations. These and the technical data are provided as indicative information only, with any errors and misprints reserved